

**SECURITY MIRROR  
INDUSTRIES LIMITED**

STAINLESS STEEL  
FRAMED MIRROR  
SERIES

# 850

## CHANNEL FRAME

One piece frame formed of 3 / 8 "(9.53mm) X 1/2" (12.7mm) X 3 / 8 "(9.53mm) type T430 BA stainless steel. Frame has square, tightly mitered corners, with unique concealed screw fixings to ensure easy field mirror replacement. Plastic protective coating placed on frame.

## MIRROR

No.1 selected polished 5 mm float glass with chemically deposited silver, electrolytically copper plated followed by a heavy coating of tough elastic paint. Mirrors conforming to GSB 12-GD5A Type B and guaranteed against silver spoilage for a period of ten years.

## STOCK SIZES\*

16" (404mm)      30" (757mm)

18" (454mm)      36" (909mm)

24" (606mm)      36" (909mm)

\* Custom Sizes Available

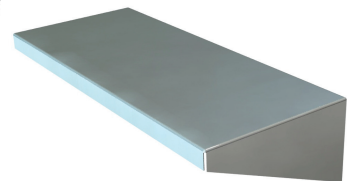
Weight: 4 lbs / sq. ft (NOT BOXED)

## GLAZING OPTIONS

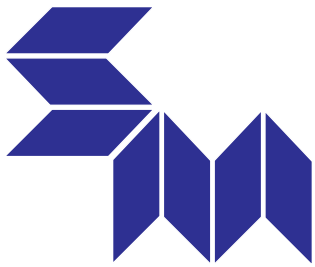
- Acrylic 6mm Mirror
- Tempered 6mm Mirror
- Laminated 6mm Mirror
- Stainless Steel 6mm Mirror



\*BACK



A stainless steel shelf, 5" (127mm) deep is available for separate mounting below all mirrors.



**SECURITY MIRROR  
INDUSTRIES LIMITED**

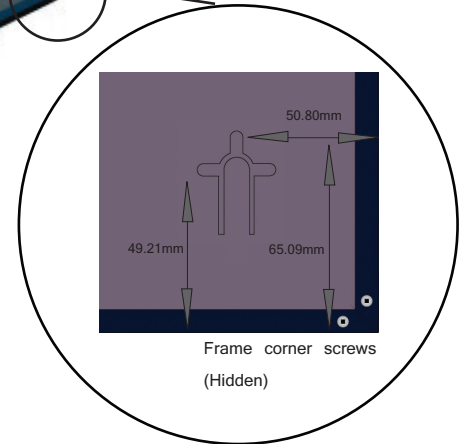
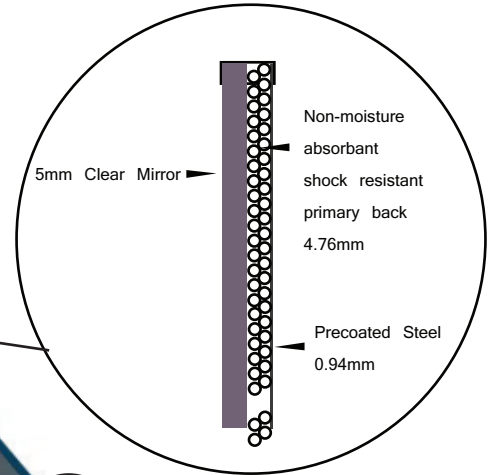
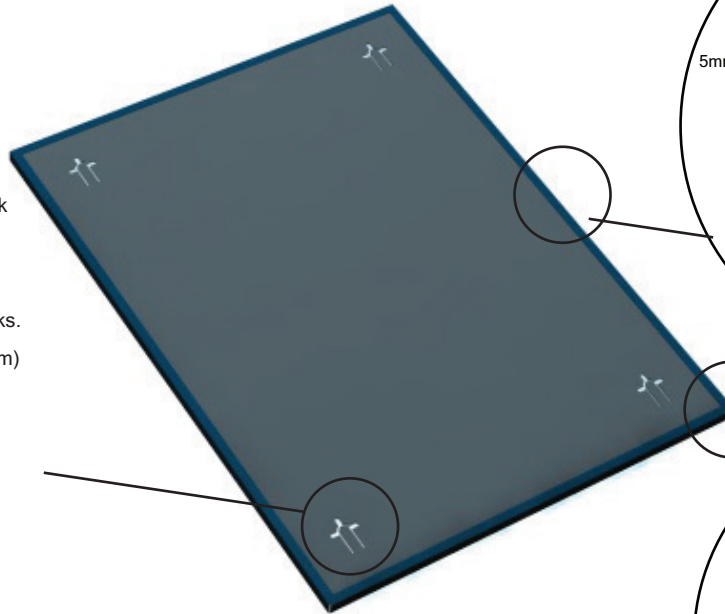
STAINLESS STEEL  
FRAMED MIRROR  
SERIES

# 850

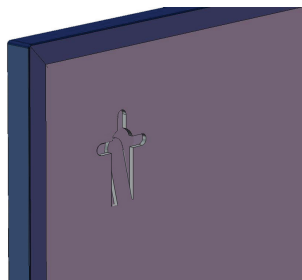
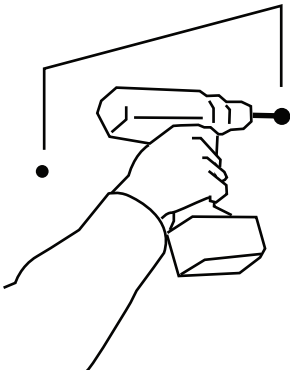
## FEATURES

Mirror is protected with a 3/16" (4.76mm) non moisture absorbent shock resistant primary back. This material will not absorb or retain moisture and cushions the mirror by absorbing shocks. The secondary back is of 0.37" (.94mm) satin coat steel.

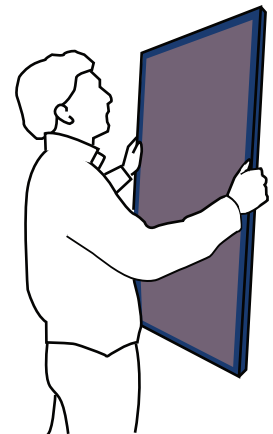
Three way keyhole slots, for either vertical or horizontal mounting, together with theft resistant clips assure a vandal resistant secure wall mounting.



## INSTRUCTIONS



Clover Leaf tab will push in as mirror is pushed against screw in wall



Once Mirror is against wall, push mirror down or sideways. Tab will then spring up to stop head of screw from coming back out of slot.